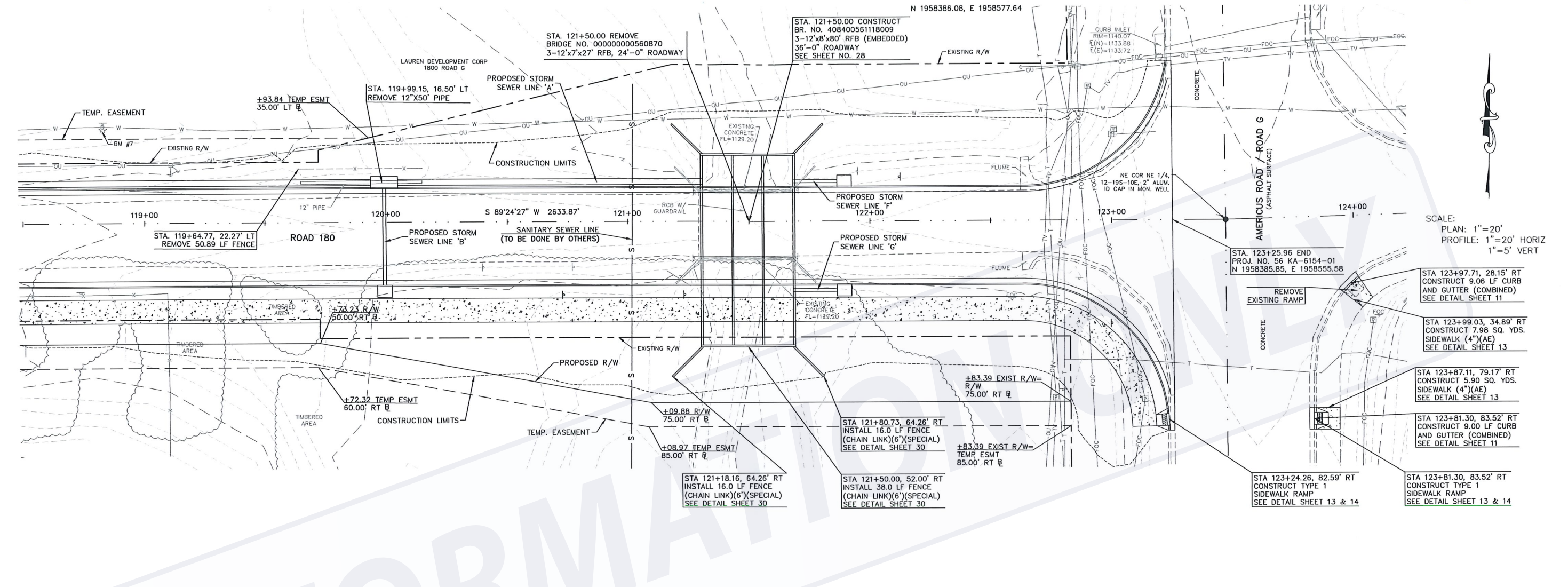


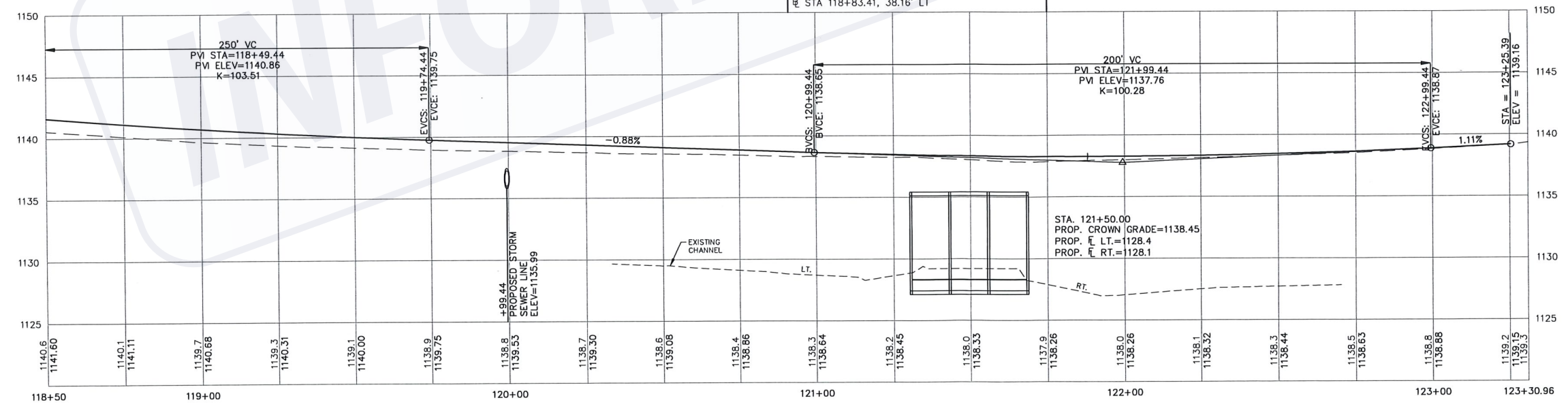
STATE	PROJECT NO.	YEAR	SHEET NO.	TOTAL SHEETS
KANSAS	56 KA-6154-01	2021	9	93

STA. 123+47.45=
 NE CORNER, NE 1/4, SECTION 12, T-19-S, R-10-E
 1. 1/2" REBAR W/ 2" ALUMINUM ID CAP IN MONITOR WELL
 N 1958386.08, E 1958577.64



SCALE:
 PLAN: 1"=20'
 PROFILE: 1"=20' HORIZ
 1"=5' VERT

BM #7: WEST BOLT ON TOP RING OF FIRE HYDRANT
 ELEV.=1145.58 (NAVD88)
 STA 118+83.41, 38.16' LT



RECEIVED WATER RESOURCES
 DEC 29 2021
 KS DEPT. OF AGRICULTURE
 KANSAS DEPARTMENT OF TRANSPORTATION
 PLAN AND PROFILE
 STA. 118+50 TO STA. 123+30.96

Plotted By : KVE
 Plot File : 2787\2787S1PP
 Plot Date : 03-19
 Std. Base File :
 Server File :
 Server :
 View =